

Tampa International Airport

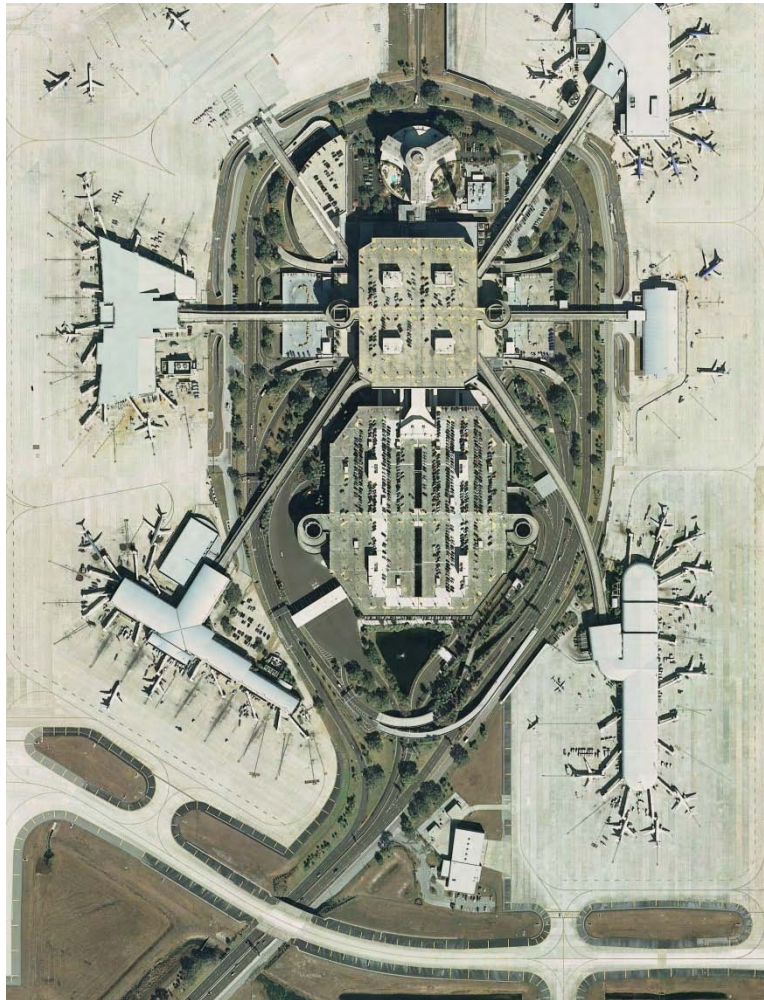
Gateway to the West Coast of Florida



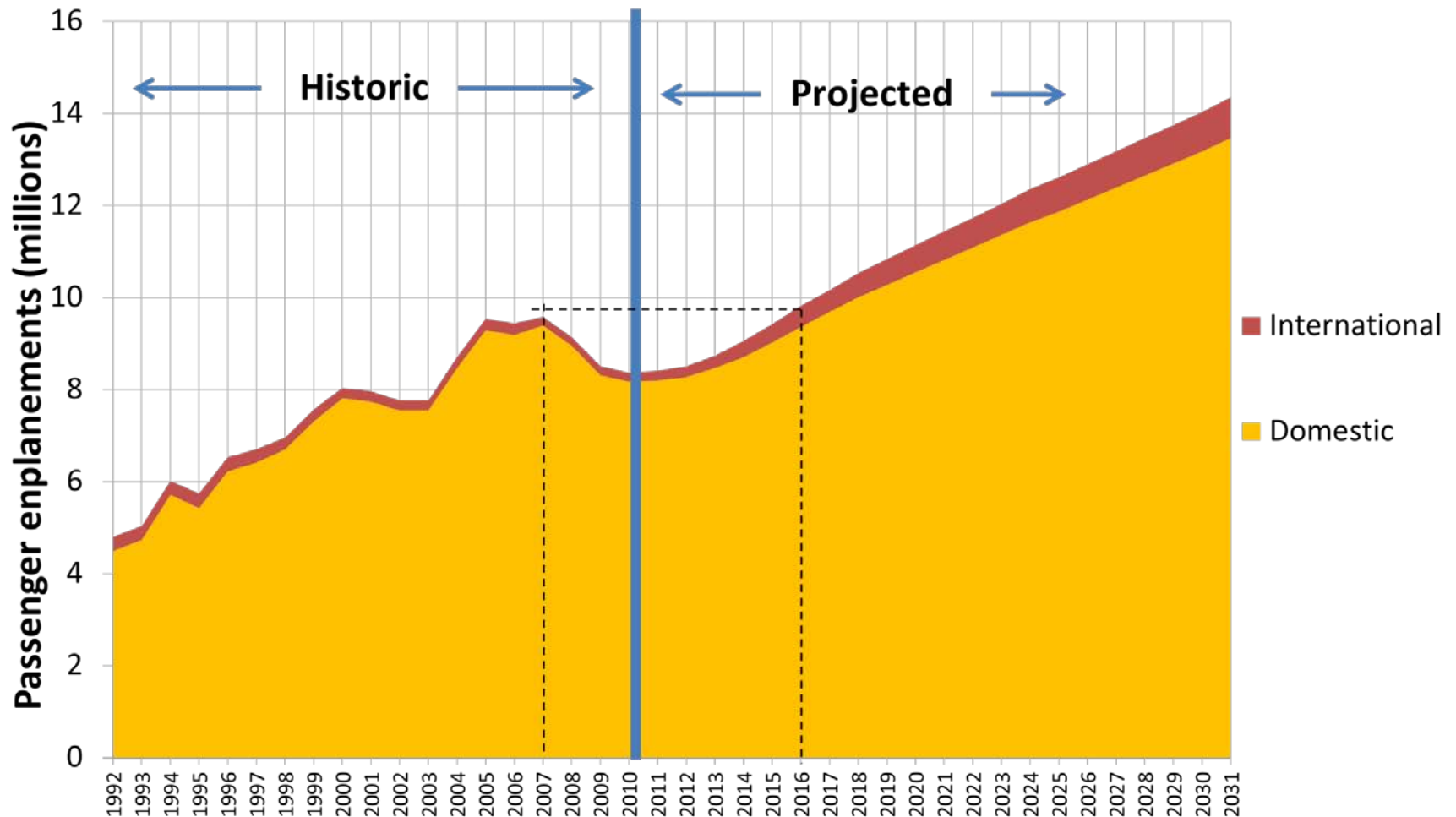
2012 Master Plan Update

Master Plan: Issues being addressed

- Curbside congestion
- Roadway congestion
- Parking capacity
- Rental car facilities
- Real estate use
- Multi-modal connectivity
- Capacity needs for international processing
- Main terminal capacity

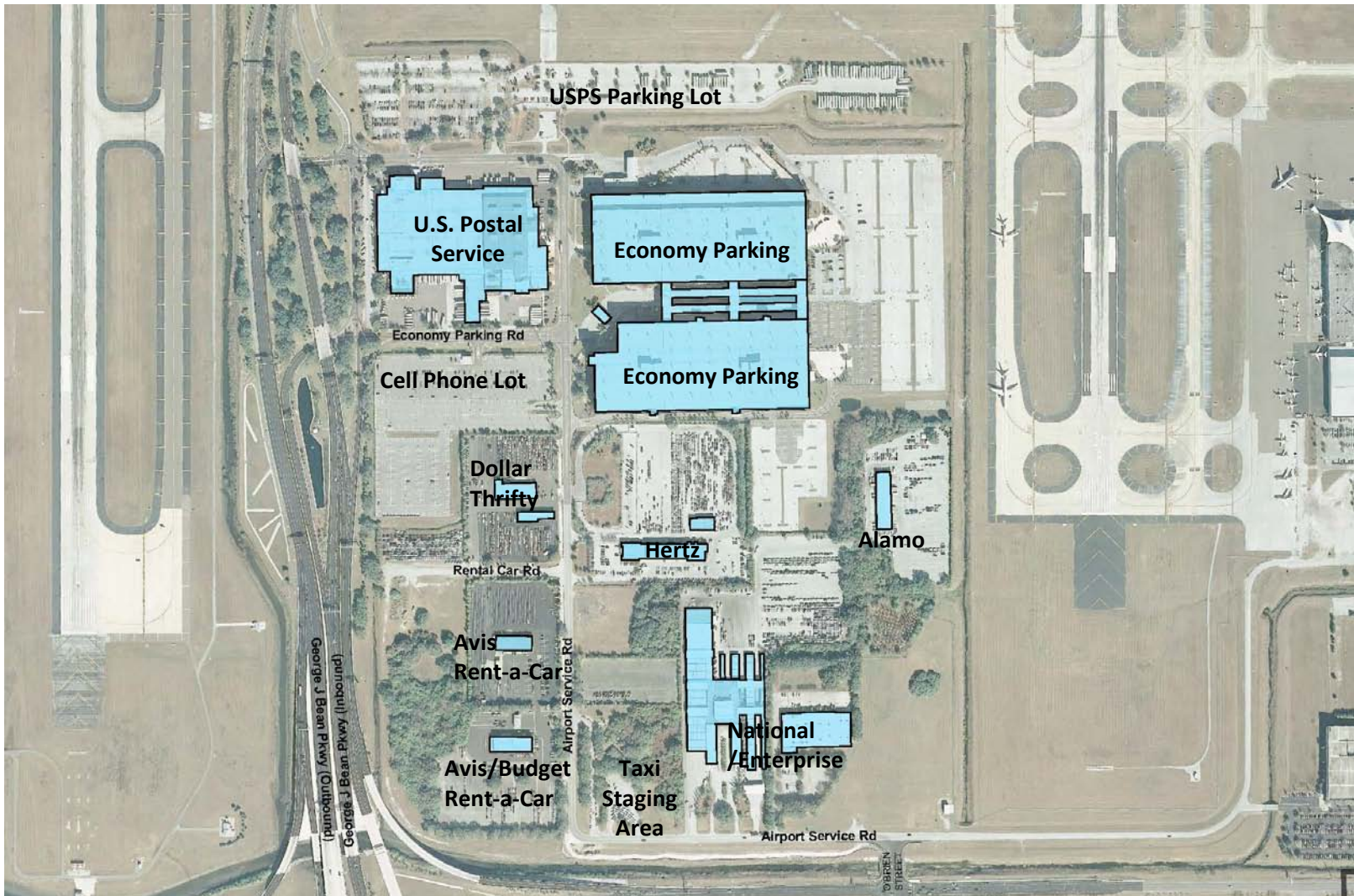


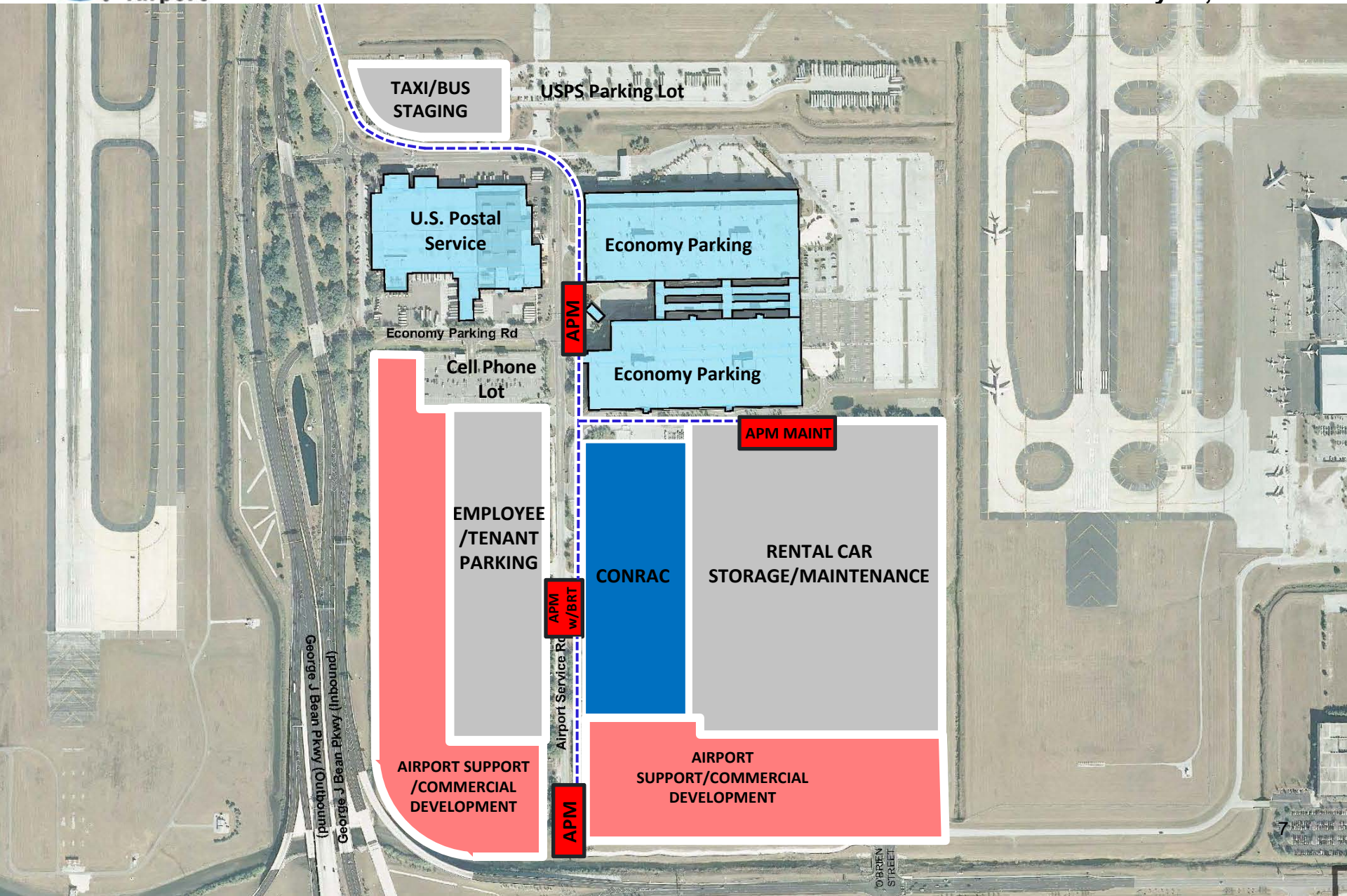
20-Year Passenger Forecast



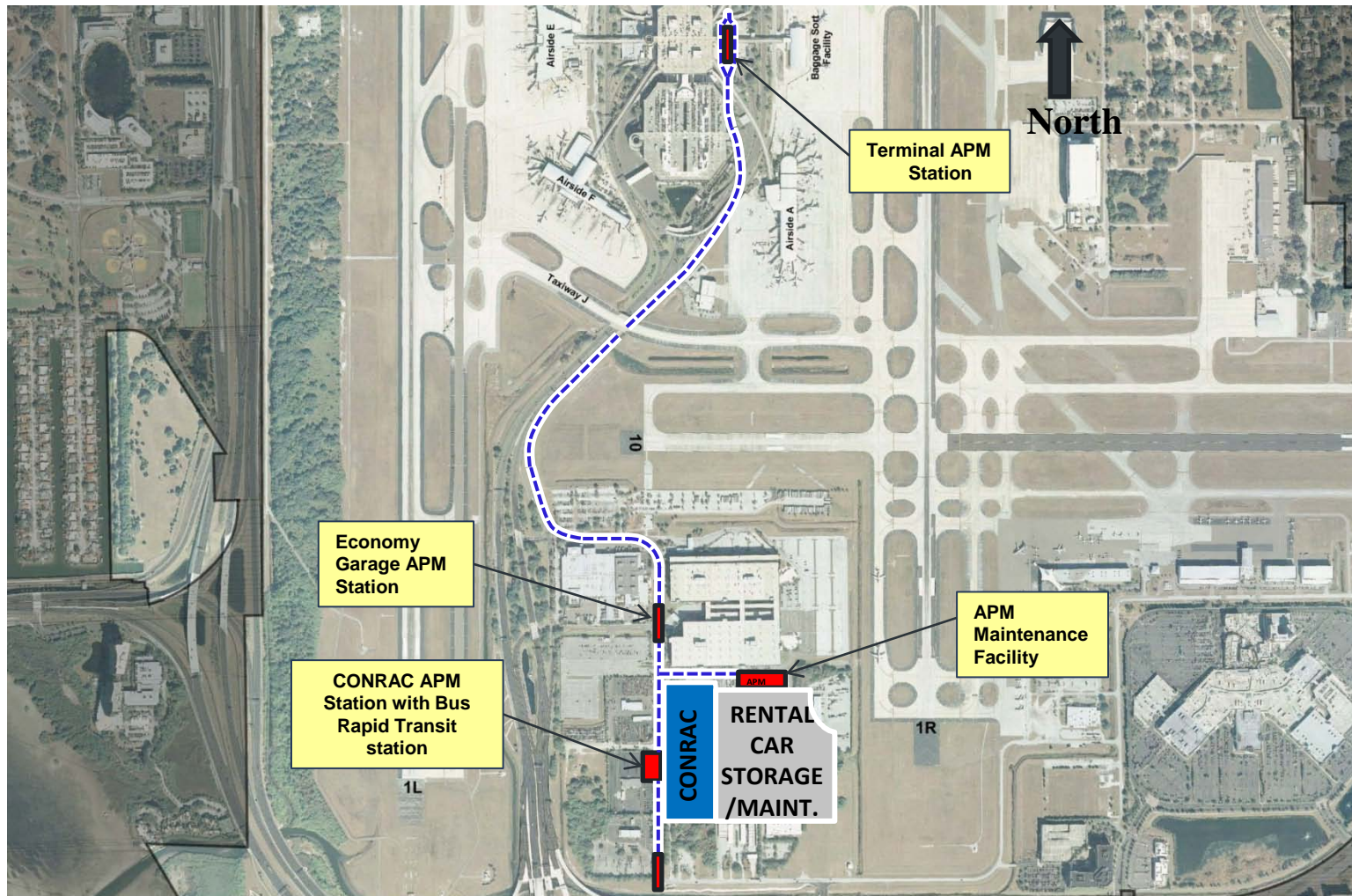
South Development Area

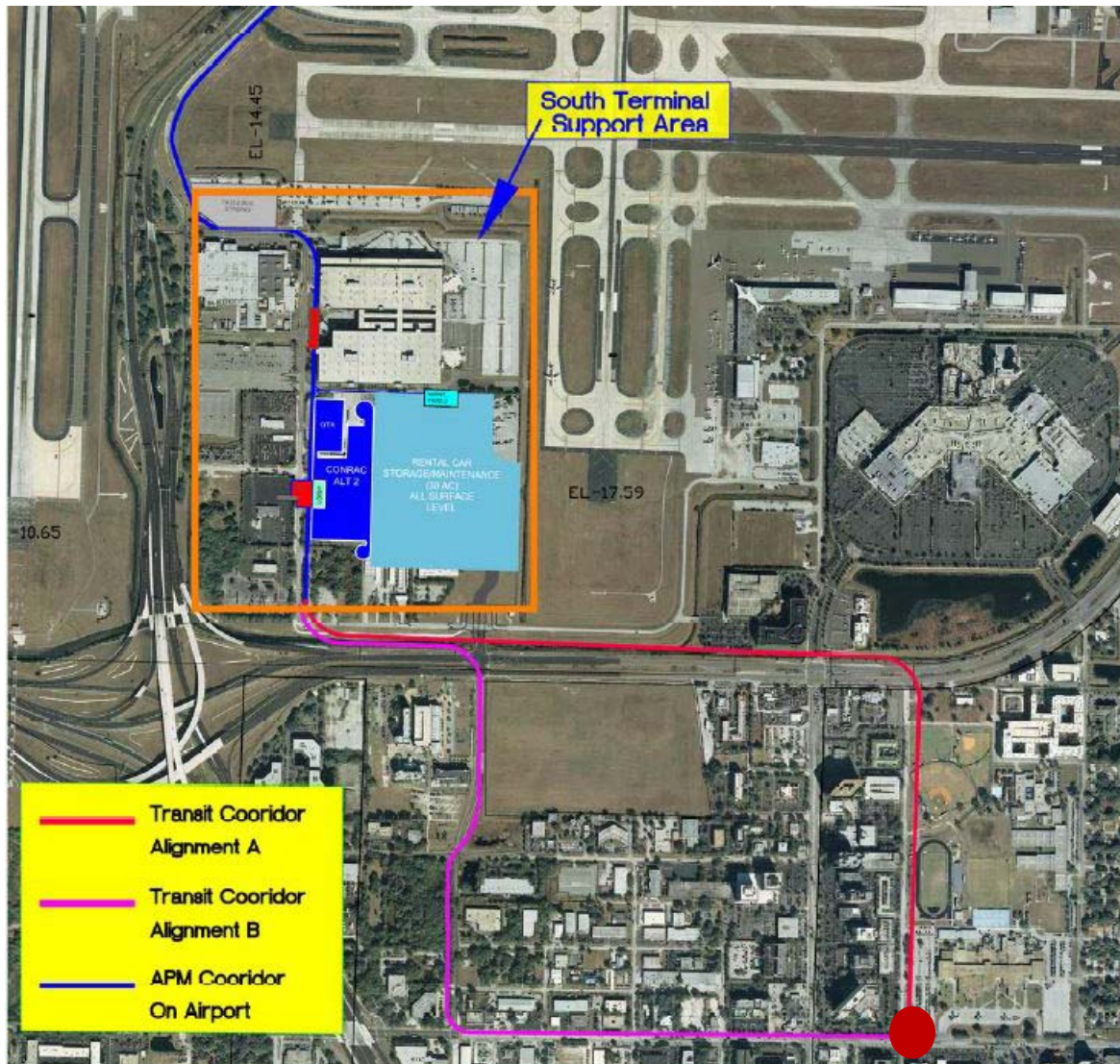
South Development Area: Existing



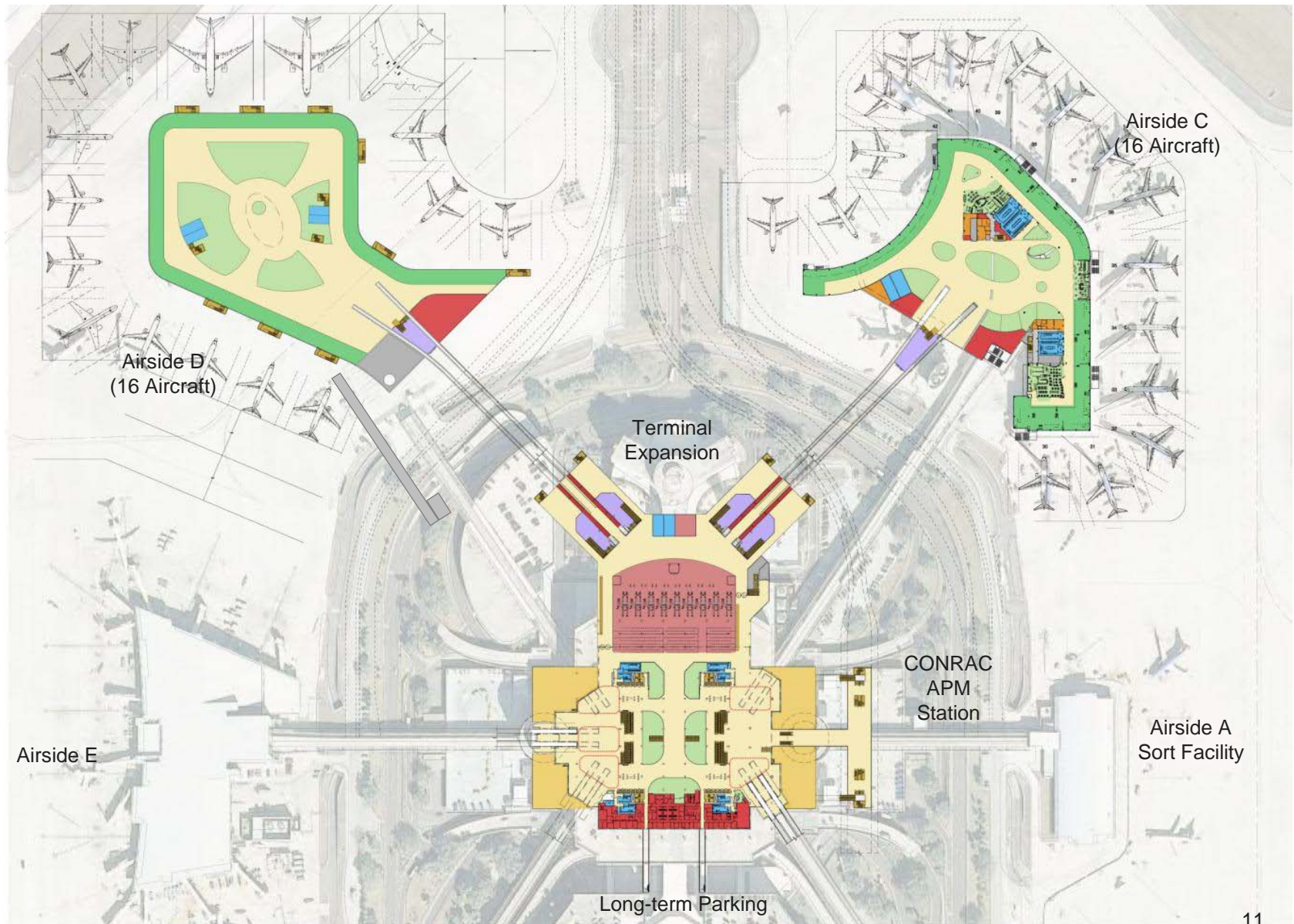


APM Alignment

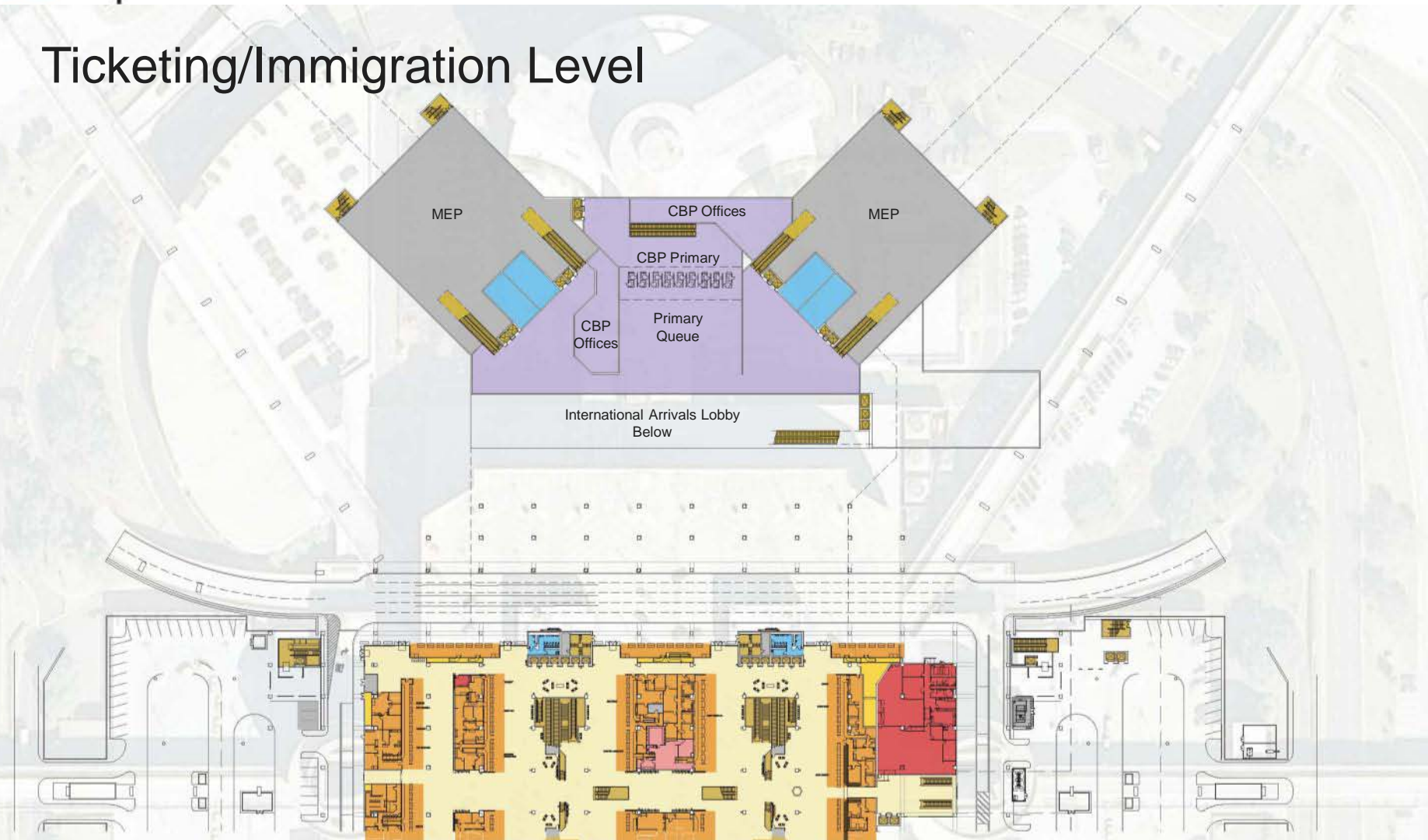




Terminal Facility



Ticketing/Immigration Level



Customs/Baggage Claim Level



Main Terminal Complex Capacity Analysis

- Existing Main Terminal (2011)
 - Annual Passengers: 16,732,051
- 2031 Main Terminal
 - Annual Passengers: 28,700,000
- 2041 Main Terminal
 - Annual Passengers: 34,700,000

Tampa International Airport

Gateway to the West Coast of Florida

