

NO SUCH PLACE AS "AWAY"

Pinellas County Utilities Solid Waste Operations STUDENT TOURS



TOUR BASICS

- Call (727) 464-7500 to schedule a tour.
- The Solid Waste Operations facility is located at 3095 114th Ave. N., St. Petersburg.
- Tours are recommended for grades 1-12 and are tailored to the age group.
- Tours last approximately 2 hours, but the time can be adjusted.
- The entertaining and educational **No Such Place As "AWAY" Tour Guide** and video enhance the tour experience.
- Tours are available Monday-Friday 9 a.m. - 3 p.m.



FREE TRANSPORTATION

- **Free bus transportation** to and from Solid Waste Operations is available for school groups. The tour vehicle can accommodate up to 42 passengers.
- **Handicapped-accessible tours** are available (advance notice is required).



WHAT STUDENTS SEE

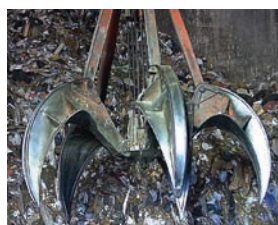
- Waste-to-Energy (WTE) facility
- Sanitary Landfill
- Yard Waste-to-Mulch facility
- Household Electronics & Chemical Collection Center

WHAT STUDENTS LEARN

- **Where their garbage goes** and the importance of minimizing waste.
- **How they can use the "3Rs"**—reduce, reuse, and recycle—to help the environment.

WRITTEN MATERIALS

- Students receive copies of a **Tour Guide**, **Recycling Directory**, and **Recycling Activity Book**.
- There is a **Teacher Guide** for the tour with answers, background information, and follow-up activities. Educators may request the video or guides ahead of time to allow preparation for the tour.



This tour supports Florida Sunshine State Standards for grades 1-12.

This is a partial listing (see the Teacher Guide for a complete listing of 64 standards):



READING / LANGUAGE ARTS

- ▶ **Vocabulary Development** - Use multiple strategies to develop vocabulary. LA.K-12.1.6.1; LA.1-12.1.6.3; LA.1-12.1.6.5; LA.K.1.6.6; LA.2.1.6.9; LA.1,3-12.1.6.10
- ▶ **Listening and Speaking** - Effectively apply listening and speaking strategies. LA.K-12.5.2.1; LA.8.5.2.2; LA.4.5.2.3; LA.4.5.2.4
- ▶ **Informational Text** - Comprehend a wide array of informational text. LA.2-12.6.1.1

MATHEMATICS

- ▶ **Geometry and Measurement** MA.2.G.5.4; MA.8.G.5.1
- ▶ **Algebra** - Big Idea 1: Develop fluency with whole number multiplication. MA.4.A.1.2
- ▶ **Algebra** - Big Idea 2: Use formulas to determine surface areas and volumes. MA.7.G.2.2
- ▶ **Algebra** - Standard 1: Perform operations using real-world problems. MA.912.A.1.4
- ▶ **Algebra** - Standard 2: Interpret a graph. MA.912.A.2.2

- ▶ **Number and Operations** - Represent and solve problems using numbers. MA.3.A.6.1; MA.6.A.5.1; MA.6.A.5.2; MA.6.A.5.3
- ▶ **Statistics** - Standard 3: Summarizing data. MA.912.S.3.1

SCIENCE

- ▶ **Nature of Science** - Big Idea 1: The Practice of Science. SC.K.N.1.2; SC.1-5.N.1.1
- ▶ **Nature of Science** - Big Idea 4: Science and Society. SC.8.N.4.1; SC.8.N.4.2

- ▶ **Earth Science** - Big Idea 6: Earth Structures (natural resources). SC.4.E.6.3; SC.4,7,912.E.6.6
- ▶ **Physical Science** - Big Idea 10: Forms of energy. SC.3-12.P.10.1; SC.3-4.P.10.2; SC.4.P.10.4
- ▶ **Life Science** - Big Idea 17: Interdependence. SC.1-2.L.17.1; SC.7.L.17.3; SC.4.L.17.4; SC.912.L.17.11; SC.912.L.17.14; SC.912.L.17.15; SC.912.L.17.16; SC.912.L.17.17; SC.912.L.17.18; SC.912.L.17.19; SC.912.L.17.20