



Pinellas County Public Works

PAIRS - Pinellas Aerial Image Retrieval System

Web User Manual
Version 1.0

Table of Contents

| | |
|--|-----------|
| INTRODUCTION..... | 2 |
| 1 - HOME PAGE..... | 2 |
| 2 – INDEX | 4 |
| 2.1 - TEXT OPTION | 5 |
| 2.1.1 – Selection of Images for the years 2000 – 1979 | 5 |
| 2.1.2 – Selection of Images for the years 1977 - 1926 | 6 |
| 2.2 - Map Option..... | 8 |
| 2.2.1 – Selection of Images for the years 2000 – 1979 | 8 |
| 2.2.2 – Selection of Images for the years 1977-1926 | 10 |
| 2.2.3 – Selecting Historical Images That Correspond to the Current Year... | 10 |
| 3 - Help | 13 |
| 4 – CONTACT US..... | 16 |

INTRODUCTION

P.A.I.R.S. is the acronym for Pinellas Aerial Imagery Retrieval System. The primary purpose of P.A.I.R.S. is to provide an efficient, user-friendly browser-based approach to obtaining Pinellas County's Aerial images for research and development activities by private and public firms.

1 - HOME PAGE

This page is shown when you visit our home page at www.pinellascounty.org/publicworks and click on the **SERVICES** button. This page has links to other pages as shown below in Screen#1.

Pinellas County

Pinellas County Public Works
PAIRS - Pinellas Aerial Image Retrieval System

[Home](#) | [Index](#) | [Help](#) | [Contact Us](#)

[Pairs Information](#)
[Site Terms and Definitions](#)
[User Manual](#)

Viewing the MAP Index requires
[MapGuide Viewer](#)

Free Viewer!
[Click to Download](#)

Upon Download,
Aerial Image Files require
[ERMapper Viewer](#)

ER Mapper Viewer
[Click to Download](#)

PDF Files require
[Adobe Acrobat Reader](#)

Get Acrobat Reader
[Click to Download](#)

Our Public Works Mission is to serve the citizens and visitors of Pinellas County by **Providing, implementing, operating and maintaining Coastal, Surface Water and Transportation Programs** in a professional manner, which support economic and community growth.

[Copyright Notice](#) | [Terms & Conditions](#) | [Privacy Policy](#)

Screen #1 – PAIRS Home Page

The following links are displayed in the Top Menu:

Home – Screen #1

The Home link will return you to the home page at any time during your session.

Index – Screen #2

The Index link will take you to the Index page where you may choose your option for locating the aerial images.

TEXT – The TEXT search option provides a tabular search method. – **Screen #2a**

MAP – The MAP search option provides an geographic search method. – **Screen #2b**

Help – Screen #3

The Help link will provide you with interactive answers to your most common questions.

Additional help and technical assistance may be obtained by contacting us through the Contact Us link.

Contact Us – Screen #4

The Contact Us link will provide you with information to contact Public Works for technical guidance and/or additional questions or concerns regarding the aerial image retrieval options or the images themselves.

The following links are displayed in the left pane:

PAIRS Information – Screen #5

The PAIRS information link provides an overview of PAIRS along with information concerning the application of the PAIRS web site and its intended audience.

Site Terms and Definitions – Screen #6

The PAIRS Site Terms and Definitions link provides a glossary of the common terms routinely used throughout the PAIRS web site and their meanings.

User Manual – Adobe Acrobat Download

The following links are displayed at the bottom of page:

Copyright notice

The Copyright notice outlines specific provisions regarding the use of the PAIRS website content.

Terms & Conditions

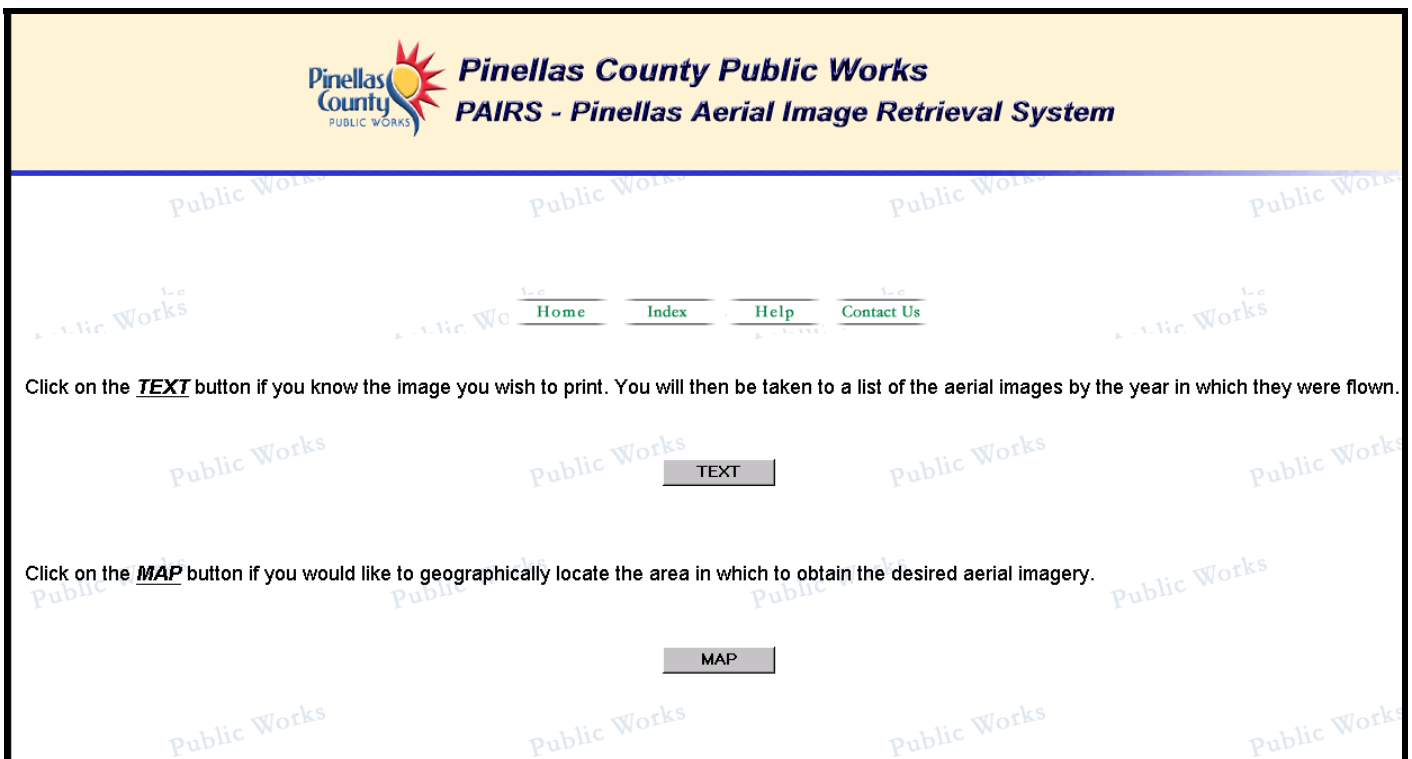
The Terms and Conditions page outlines the requirements for use and duplication of the PAIRS website.

2 – INDEX

The Index link, as seen below in Screen #2, provides the option to select aerial images in one of 2 ways.

1. **TEXT** – Select the TEXT option to select aerial images through a tabular list, organized by the year and the grid location. The TEXT search option is visible in Screen #2a.
2. **MAP** – Select the MAP option to use an interactive, geographic display of Pinellas County to locate the desired aerial image. This method provides the most useful approach to locating the historical aerials that correspond to the current aerials. This option also provides the ability to display information relative to the geographic location of your aerial such as major roads, zip code boundaries, and municipal boundaries. An interactive help feature is available by clicking on the help link at the top of every page. The MAP search option is visible in Screen #2b.

NOTE: To view the MAP you must download the **MapGuide** viewer. This is a one-time download and is available on our site.




Screen #2 – PAIRS Index Page

2.1 - TEXT OPTION

2.1.1 – SELECTION OF IMAGES FOR THE YEARS 2000 – 1979

- Select the year from the list box “Year” for years 2000 -1979
- Next, select Township & Range from the list box “Township & Range”.
- On selection of Township & Range, the list of aerial images is shown in Tabular form. See Screen #2a below.
- Next, select the Image by left-clicking your mouse button. A thumbnail image will appear of the selected image to your right. – Screen #2b
- To see a larger view of this image, click on the thumbnail image. You will be taken to a full screen view of the image in its respective title block. This is useful in determining whether you have chosen the aerial you are looking for. – Screen #2b.1
- **NOTE:** There is no way in the TEXT search option to associate or reference historical aerial images to their corresponding locations on the current Section/Township/Range grid. This may be done, however by using the MAP search option available from the Index screen.



Home Index Help Contact Us


Please select the Aerial Year , Township & Range you wish to view:

Year:
Township & Range:

Year: 2000 >> Township & Range: 33_16

| | | |
|---------|---------|---------|
| 023316N | 023316S | 033316N |
| 033316S | 043316N | 043316S |
| 053316N | 053316S | 063316N |
| 063316S | 073316N | 073316S |
| 083316N | 083316S | 093316N |
| 093316S | 103316N | 103316S |
| 113316N | 113316S | 143316N |
| 143316S | 153316N | 153316S |
| 163316N | 163316S | 173316N |
| 173316S | 183316N | 183316S |

Note: Click on the image above to view a thumbnail image at right.



Download

Click on the image to enlarge


< << >> >

Year: 2000
Township & Range: 33_16
Scale: 1"=200'
Image Size: 24x36 inches

Screen #2a – PAIRS TEXT Search Option – 2000 – 1979 Images

2.1.2 – SELECTION OF IMAGES FOR THE YEARS 1977 - 1926

- Select the year from the list box “Year” for years 1977 - 1926
- On selection of the Image year, the list of aerial images is shown in Tabular form grouped according to the images respective grid.
See Screen #2a below.
- Next, select the Image by left-clicking your mouse button. A thumbnail image will appear of the selected image to your right. – Screen #2a.1
- To see a larger view of this image, click on the thumbnail image. You will be taken to a full screen view of the image in its respective title block. This is useful in determining whether you have chosen the aerial you are looking for. – Screen #2a.2
- **NOTE:** There is no way in the TEXT search option to associate or reference historical aerial images to their corresponding locations on the current Section/Township/Range grid. This may be done, however buy using the MAP search option available from the Index screen.


Pinellas County Public Works
PAIRS - Pinellas Aerial Image Retrieval System

[Home](#) [Index](#) [Help](#) [Contact Us](#)


Please select the Aerial Year you wish to view:

Year:

Year: 1926

| Group: A | | |
|----------|-------|-------|
| 26_01 | 26_06 | 26_07 |
| 26_08 | 26_09 | 26_10 |
| 26_11 | 26_12 | 26_13 |
| 26_14 | 26_15 | 26_16 |
| 26_17 | 26_18 | 26_19 |
| 26_20 | 26_21 | 26_22 |
| 26_23 | 26_24 | 26_25 |
| 26_26 | 26_27 | 26_28 |
| 26_29 | 26_30 | 26_31 |
| 26_32 | 26_33 | 26_34 |
| 26_35 | 26_36 | |

Note: Click on the image above to view a thumbnail image at right.



[Download](#)

Click on the image to enlarge

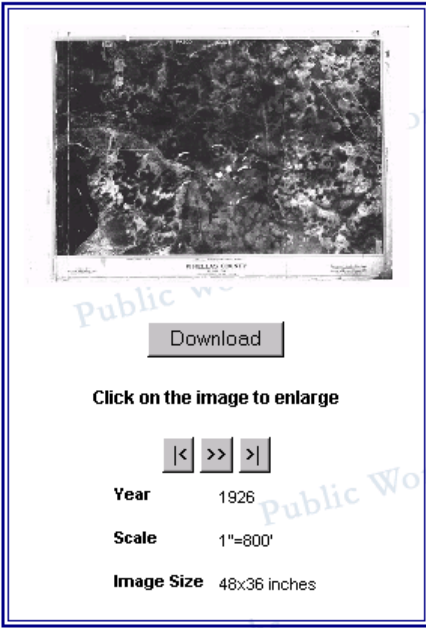
|<
>>|

Year: 1926





Scale: 1"=800'

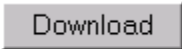
Image Size: 48x36 inches

Screen #2a PAIRS TEXT Search Option – 1977-1926 Images



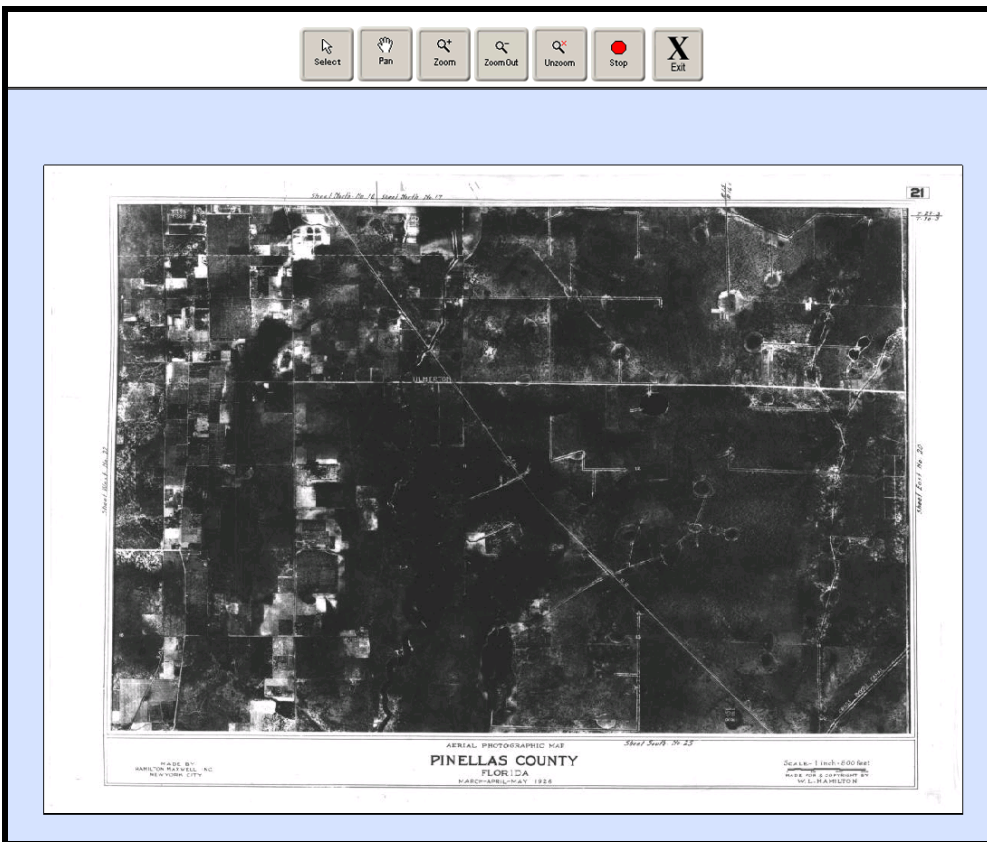
The thumbnail view displays pertinent information about each aerial including the Year, Township/Range, and the Scale.

-  Move to First Image
-  Move to Previous Image
-  Move To Next Image
-  Move To Last Image

 **Download** – Once you have selected the image you desire, click on the download button. The image will be downloaded to your local PC.

NOTE: All images downloaded require the ERMapper Viewer application in order to view and **PRINT** the downloaded aerials on your local PC. This is available on the PAIRS site.

Screen #2a.1- Thumbnail view



Screen #2a.1 – Full-Screen Image view

The Full-Screen view allows you to search the aerial that you have selected to determine whether or not you have chosen the correct one. The navigational buttons located at the top of the screen will allow you to search the image and are described below.



Select – Use this tool to select the other buttons.



Pan – Use this tool to move from left to right over the image.



Zoom IN - Use this tool to zoom into the image or to a closer scale. You may also hold down your left mouse button and draw a window over the map to zoom into.



Zoom OUT - Use this tool to zoom away from the image or to a higher scale.



Unzoom - Use this tool to zoom out to the image's original scale.



Stop - Use this tool to stop any of the above actions from processing.



Exit - Use this tool to exit the full-screen view and return to the TEXT index.

2.2 - MAP OPTION

- **NOTE:** Before you are able to view any images, you need to download and install the MapGuide viewer available on this page. Once you have done so, the map will load and become visible.
- After the MAP of Pinellas County finishes loading, take a moment to familiarize yourself with the screen. - See Screen #2b below
 - a. To the left of the map is a legend that you may use to select aerial indexes for all of our aerial years along with points of interest, which help you find your location.
 - b. To the right of the MAP are the tools that help you use the MAP effectively. These tools include a pan button, a zoom button and a select button.

2.2.1 – SELECTION OF IMAGES FOR THE YEARS 2000 – 1979

Now that the base map has finished loading follow the steps below to select your aerials:

1. Select the Aerial Index you wish to obtain aerials from by selecting it from the list box on the Legend for years 2000 –1979. You may also select several of the Points of Interest to further assist in locating your area.

NOTE: In a moment, the index will appear and become active. Running your mouse pointer over any feature without selecting it will produce information about it, such as Section/Township/Range and size or feature name.

- Once you select the aerial year you wish to obtain, left click once in the grid in the area you feel is where you want to be and a thumbnail view of the image will appear to the right of the map.

NOTE: If the image is not available, you will see a message where the thumbnail should appear indicating that the **Image Does Not Exist**.

 Screen #2b.1
- To see a larger view of this image, click on the thumbnail image. You will be taken to a full screen view of the image in its respective title block. This is useful in determining whether you have chosen the aerial you are looking for.
 Screen #2b.2
- If this is the aerial you want, exit the full screen view and verify your item for download.
- Click the download button. You may then select additional images for download.

Pinellas County Public Works
PUBLIC WORKS
PAIRS - Pinellas Aerial Image Retrieval System

Home Index Help Contact Us

Major Roads
 Local Streets
 County Outline
 Municipal Boundaries
 Zip Code Boundaries
 Full County 2000 Image
 Image Grid - 2000
 Image Grid 1926 To 2000
 2000 Remove Grid
 Map Refresh
 Viewing the MAP Index requires
[MapGuide Viewer](#)

 Click to Download
 Upon Download, Aerial Image Files require
[ERMapper Viewer](#)

 Click to Download

Year:2000
TownshipRange:33_16
Scale:1" = 200'
Image Name:183316N
Imagesize:24 X 36 Inches

Image Grid 1 "Image Grid 2000" selected 1 : 538,466 48.0 x 48.7 (mi)

Width: [LOADING] mi km

Download
 Click on the image to enlarge
 Year 2000
 Township & Range 33_16
 Scale 1" = 200'
 ImageName 183316N
 ImageSize 24 X 36 Inches

Screen #2b – PAIRS MAP Search Option

2.2.2 – SELECTION OF IMAGES FOR THE YEARS 1977-1926

Now that the base map has finished loading follow the steps below to select your aerials:

1. Select the Aerial Index you wish to obtain aerials from by selecting it from the list box on the Legend for years 2000 –1979. You may also select several of the Points of Interest to further assist in locating your area.
2. **NOTE:** In a moment, the index will appear and become active. Running your mouse pointer over any feature without selecting it will produce information about it, such as Section/Township/Range and size or feature name.
3. Once you select the aerial year you wish to obtain, left click once in the grid in the area you feel is where you want to be and a thumbnail view of the image will appear to the right of the map.
4. **NOTE:** If the image is not available, you will see a message where the thumbnail should appear indicating that the **Image Does Not Exist**.
Screen #2b.1
5. To see a larger view of this image, click on the thumbnail image. You will be taken to a full screen view of the image in its respective title block. This is useful in determining whether you have chosen the aerial you are looking for.
Screen #2b.2
6. If this is the aerial you want, exit the full screen view and verify your item for download.
7. Click the download button. You may then select additional images for download.

2.2.3 – SELECTING HISTORICAL IMAGES THAT CORRESPOND TO THE CURRENT YEAR

1. Turn on the Image Grid – 2000 layer by clicking the checkbox in the legend to ON. The 2000 Image grid will appear over the base map. Zoom in to a scale less than 75,000 feet. At this scale, the Section/Township/Range numbers will be displayed on the Image Grid 2000 Layer. These correspond to the year 2000 images but will be helpful if you know the Section/Township/Range of the area you are looking for.
2. While still zoomed in, select one of the historical grids from the drop down list. Only the grid you selected will be activated. If you wish to change grids, simply select another one from the drop down list. You may also select several of the Points of Interest to further assist in locating your area.
NOTE: In a moment, the index will appear and become active. Running your mouse pointer over any feature without selecting it will produce information about it, such as Grid ID and size or feature name.
3. Click on the map in the area you are interested in. The historical grid that is overlaid on top of the Image Grid – 2000 layer will correspond to the area you are interested in by the current Section\Township\Range grid.
Screen #2b.1
4. Once you select the aerial year you wish to obtain by using the Image Grid – 2000 layer to locate it, left click once in this area and a thumbnail view of the historical image you selected will appear to the right of the map.
NOTE: If the image is not available, you will see a message where the thumbnail should appear indicating that the **Image Does Not Exist**.
Screen #2b.2

- To see a larger view of this image, click on the thumbnail image. You will be taken to a full screen view of the image in its respective title block. This is useful in determining whether you have chosen the aerial you are looking for.

Screen #2b.3

- If this is the aerial you want, exit the full screen view and verify your item for download.
- Click the download button. You may then select additional images for download.



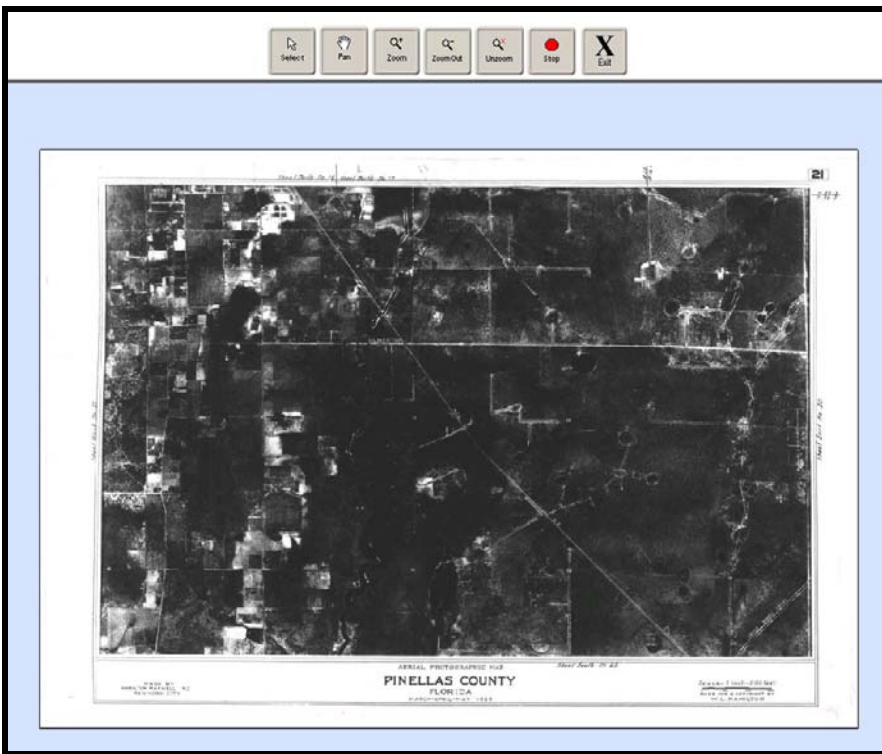
The thumbnail view displays pertinent information about each aerial including the Year, Township/Range, and the Scale.



Download – Once you have selected the image you desire, click on the download button. The image will be downloaded to your local PC.

NOTE: All images downloaded require the ERMapper Viewer application in order to view and **PRINT** the downloaded aerials on your local PC. This is available on the PAIRS site.

Screen #2b.1- Thumbnail view



Screen #2b.2 – Full-Screen Image view

The Full-Screen view allows you to search the aerial that you have selected to determine whether or not you have chosen the correct one. The navigational buttons located at the top of the screen will allow you to search the image and are described below.



Select – Use this tool to select the other buttons.



Pan – Use this tool to move from left to right over the image.



Zoom IN - Use this tool to zoom into the image or to a closer scale. You may also hold down your left mouse button and draw a window over the map to zoom into.



Zoom OUT - Use this tool to zoom away from the image or to a higher scale.



Unzoom - Use this tool to zoom out to the image's original scale.



Stop - Use this tool to stop any of the above actions from processing.



Exit - Use this tool to exit the full-screen view and return to the TEXT index.

[Home](#) [Index](#) [Help](#) [Contact Us](#)

Major Roads
 Local Streets
 County Outline
 Municipal Boundaries
 Zip Code Boundaries
 Full County 2000 Image
 Image Grid - 2000

Image Grid 1926 To 2000

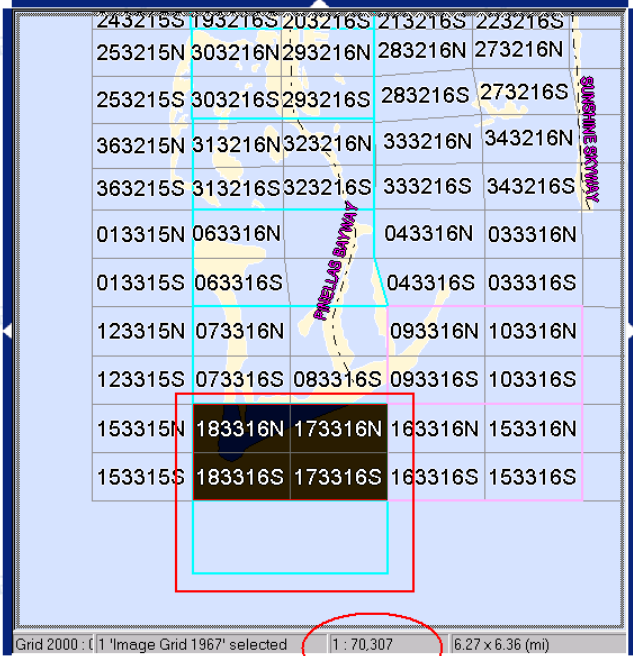
1967

Viewing the MAP Index requires
[MapGuide Viewer](#)

Free Viewer!


Upon Download,
 Aerial Image Files require
[ERMapper Viewer](#)

ER Viewer



Grid 2000 : ([1 'Image Grid 1967' selected] 1 : 70,307 6.27 x 6.36 (mi)

Width: mi km



Click on the image to enlarge

Year 1967

Scale 1" = 400'

ImageName 67_E_20_N

ImageSize 24 X 36 Inches

Screen #2b.3 – Coordinating Historical Images with the Current Year

NOTES:

1. The scale at the bottom of the map is below 75,000 feet. This is necessary for the Section/Township/Range numbers to display.
2. The Image Grid – 2000 layer is turned “ON”.
3. The 1967 grid is overlaid on top of the base map and the Image Grid – 2000 layer.
4. The aerial selected is from 1967. This aerial’s grid reference is E_20_N. The 1967 aerial is the aerial that corresponds to the 2000 aerial in the above map pictures – 183316N. This is possible by using the Image Grid – 2000 layer.

3 - HELP

Upon clicking the HELP link at the top of any page you will be taken to a list of questions. These questions represent the bulk of the requests that have been generated since PAIRS’ inception.

Screen #3a

Clicking on any of the any of the links that assist you in using the Index options will produce an interactive view of the screen with information displayed about it. See the MAP example.

Screen #3b



Pinellas County Public Works PAIRS - Pinellas Aerial Image Retrieval System

[Home](#) [Index](#) [Help](#) [Contact Us](#)

[How do I use PAIRS?](#) 06/30/2003

[How do I use the MAP interface?](#) 06/30/2003

[How do I use the TEXT interface?](#) 06/30/2003

[How do I locate the historical aerials that correspond to the current aerials?](#) 07/11/2003

[How do I view the images I've downloaded?](#) 06/30/2003

[Is there any MetaData or information for the Aerials on Pairs?](#) 02/06/2002

[What if I want these Prints on CD, ROM or other media?](#) 02/06/2002

Screen #3a – PAIRS Help Screen (with MAP help selected – Screen#3b)

Pinellas County Public Works
Pinellas Aerial Image Retrieval System

Home Index Help Contact Us

STEP #1 - DOWNLOAD AND INSTALL THE MAPGUIDE VIEWER.

AFTER THIS INSTALLATION IS COMPLETE, SELECT THE LAYERS YOU WISH TO SEE IN THE MAP FROM THE **LEGEND:**

- Major Roads
- Local Streets
- County Outline
- Municipal Boundaries
- Zip Code Boundaries
- Full County 2000 Image
- Image Grid - 2000

Image Grid 1926 To 2000

2000 Remove Grid

Map Refresh

Year: 2000
 Township & Range: 33_16
 Scale: 1" = 200'
 ImageName: 183316N
 ImageSize: 24 X 36 Inches

1 "Image Grid 2000" selected | 1 : 538,466 | 48.0 x 48.7 (mi)


Width: LOADING mi km C

Screen #3b – PAIRS MAP help (STEP #1 Selected – new window appears with additional information)

4 – CONTACT US

The Contact Us screen provides you with contact information for technical support and general questions. Please allow sufficient time for responses to be generated.

Screen #4

 **Pinellas County Public Works**
PAIRS - Pinellas Aerial Image Retrieval System

[Home](#) [Index](#) [Help](#) [Contact Us](#)

Contact Us

Pinellas County Public Works
440 Court Street
Clearwater, FL - 33756

PAIRS Technical Assistance
(727) 464-5503

[E-mail](#) Pairs technical assistance

Screen #4 - PAIRS Contact Us Screen