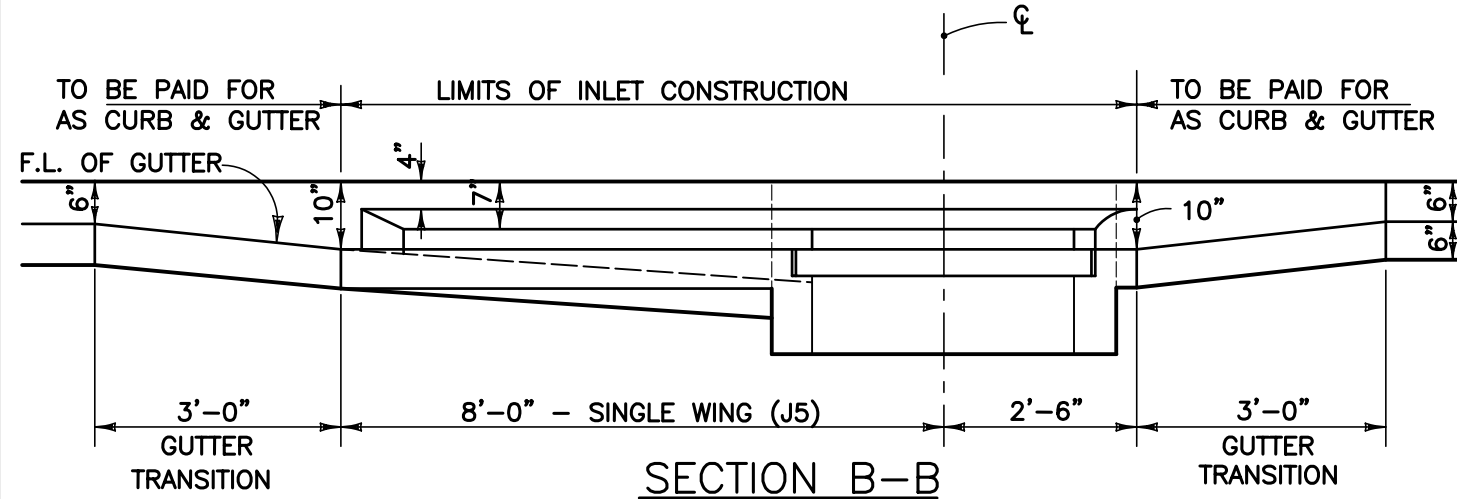


GENERAL NOTES

1. COVER FOR ALL REINFORCING STEEL SHALL BE 2" MINIMUM.
2. INLETS SHALL BE CONSTRUCTED OF REINFORCED CONCRETE, AND MAY BE EITHER PRECAST OR POURED IN PLACE.
3. CONCRETE SHALL BE CLASS II, WITH $F_c' = 3400$ PSI (MIN). CONCRETE SHALL BE IN ACCORDANCE WITH SECTION 346 OF F.D.O.T.'S STANDARD SPECIFICATIONS FOR ROAD AND BRIDGE CONSTRUCTION.
4. REINFORCING STEEL SHALL BE GRADE 60, DEFORMED, AND SHALL CONFORM TO THE REQUIREMENTS OF ASTM SPECIFICATION A 615.
5. UNLESS OTHERWISE NOTED, ALL EXPOSED EDGES AND CORNERS OF CONCRETE SHALL HAVE A 3/4" CHAMBER.



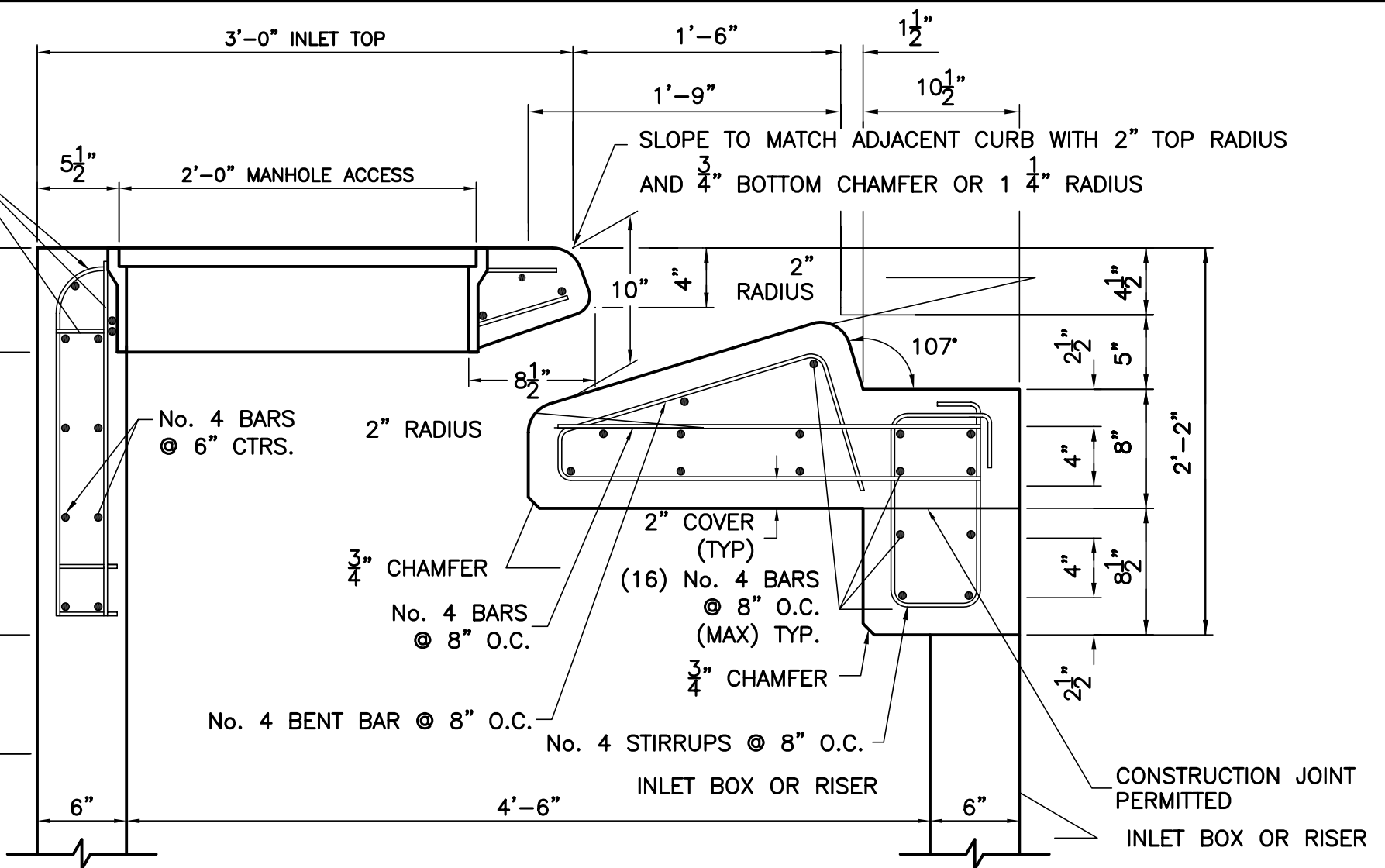
(CURB INLET TOP TYPE J6 IS SYMMETRICAL ABOUT THE CENTER LINE)

DEPARTMENT OF PUBLIC WORKS			
PINELLAS COUNTY, FLORIDA			
P.C.E.D. J5 & J6 INLETS			
(MODIFIED FDOT J5 & J6 CURB INLETS)			
APPROVED BY:	DATE	SHEET	INDEX
DIRECTOR OF PUBLIC WORKS	9/99	1 of 2	1260

No. 5 BARS
 @ 5" CTRS.
 (PROVIDE HORZ.
 HOOK ON THROAT
 END OF TOP BAR)

PIPE SHALL NOT BE CONSTRUCTED
 WITHIN THESE LIMITS.

BOX SLAB OR FILLET
 PLUS PIPE WALL



INLET TOP:
 No. 4 TOP BARS @ 6" O.C.
 No. 4 BOTTOM BARS @ 6" O.C.

(CONCRETE COVER SHOWN)
SECTION A-A
 N.T.S.

NOTE: MANHOLE COVER & FRAME TO BE F.D.O.T. INDEX
 No. 201, TYPE III.
 CONTRACTOR TO SUBMIT SHOP DRAWING TO THE
 ENGINEER FOR APPROVAL PRIOR TO CONSTRUCTION.
 J5 DESIGNATES A SINGLE WING INLET.
 J6 DESIGNATES A DOUBLE WING INLET.

DEPARTMENT OF PUBLIC WORKS			
PINELLAS COUNTY, FLORIDA			
P.C.E.D. J5 & J6 INLETS			
(MODIFIED FDOT J5 & J6 CURB INLETS)			
APPROVED BY:	DATE	SHEET	INDEX
_____ DIRECTOR OF PUBLIC WORKS	1/99	2 of 2	1260