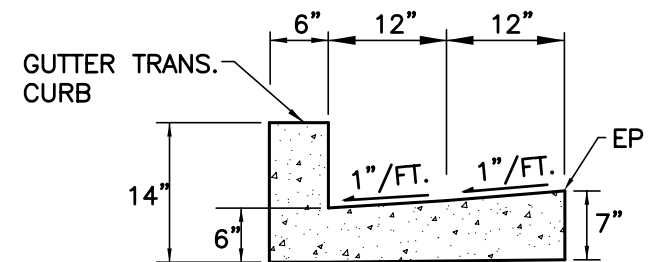
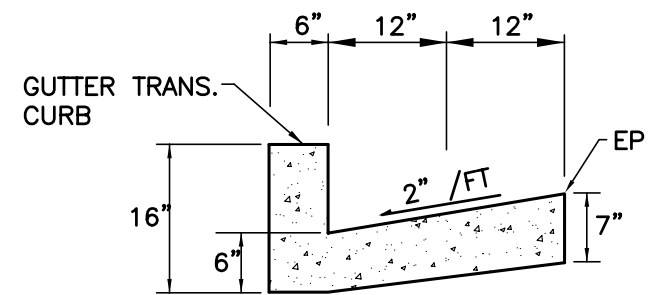


SECTION E-E



SECTION D-D

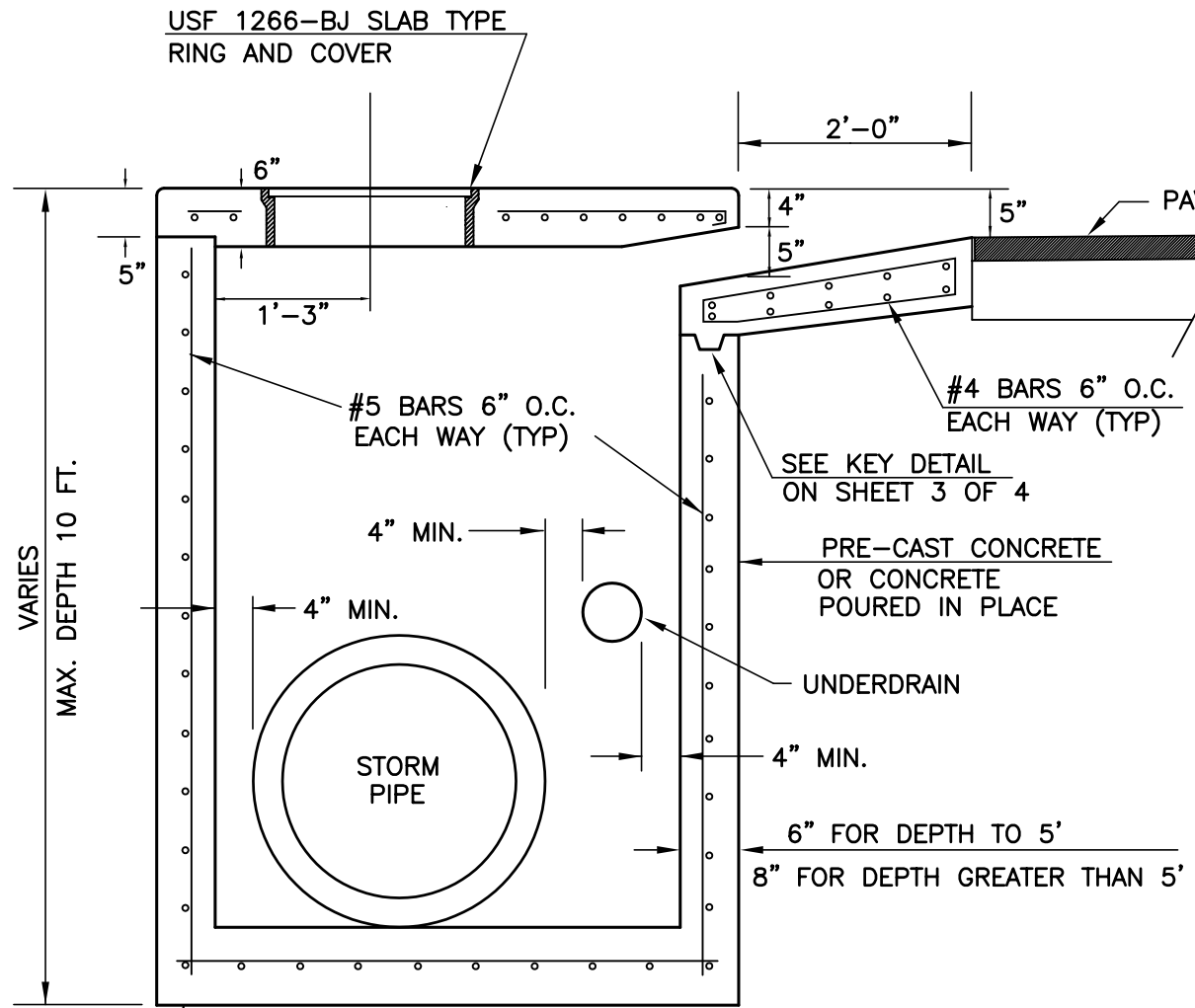


SECTION C-C

NOTES

1. SECTIONS 'A'-'A' AND 'B'-'B' ARE ON SHEET 2 OF 4.
2. SECTIONS 'C'-'C', 'D'-'D', AND 'E'-'E' ON THIS SHEET SHOW TRANSITION FOR TYPE 'A' CURB AND GUTTER.
3. TRANSITION FOR TYPE 'F' CURB IS ON SHEET 4 OF 4.
4. SECTION 'F'-'F' IS ON SHEET 3 OF 4.
5. RC-4 IS SYMMETRICAL ABOUT THE CENTERLINE.
6. RC-5 IS CONSTRUCTED WITHOUT WINGS.

DEPARTMENT OF PUBLIC WORKS			
PINELLAS COUNTY, FLORIDA			
P.C.E.D. CURB INLET			
(TYPES RC-3, 4, & 5)			
APPROVED BY:	DATE	SHEET	INDEX
DIRECTOR OF PUBLIC WORKS	6/02	1 of 4	1255



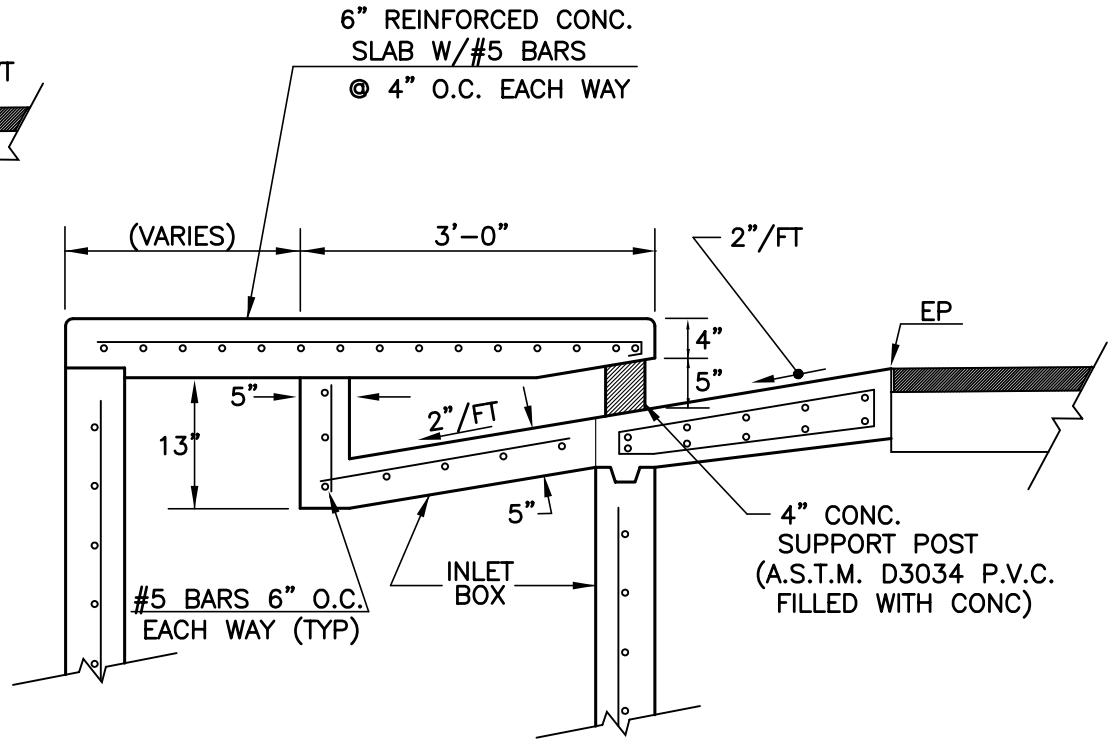
VARIES
MAX. DEPTH 10 FT.

6"
5"
1'-3"
4" MIN.
4" MIN.
STORM PIPE
UNDERDRAIN
4" MIN.
6" FOR DEPTH TO 5'
8" FOR DEPTH GREATER THAN 5'

VARIES
3'-6" MIN
7'-0" MAX

8" REINFORCED CONC SLAB
W/#5 BARS @ 6" O.C. EACH WAY (TYP)

SECTION A-A
NTS

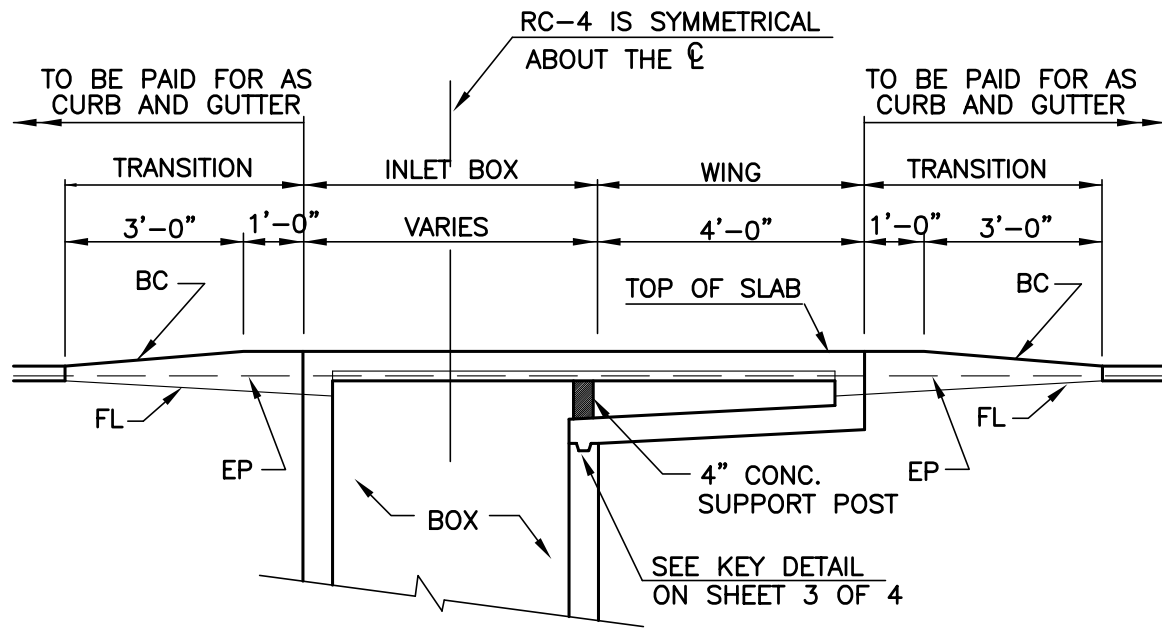


SECTION B-B
(VIEW THROUGH INLET BOX AND WING TRANSITION)

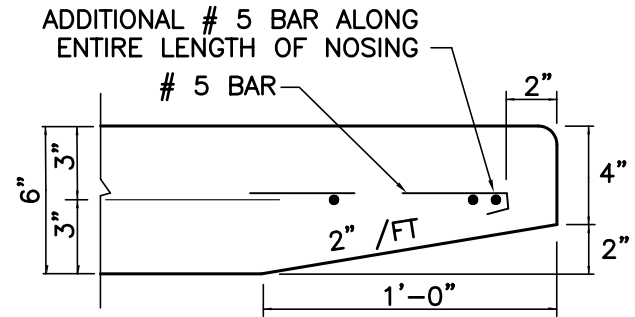
NOTES

1. RC-4 IS SYMMETRICAL ABOUT THE CENTERLINE
2. RC-5 IS CONSTRUCTED WITHOUT WINGS

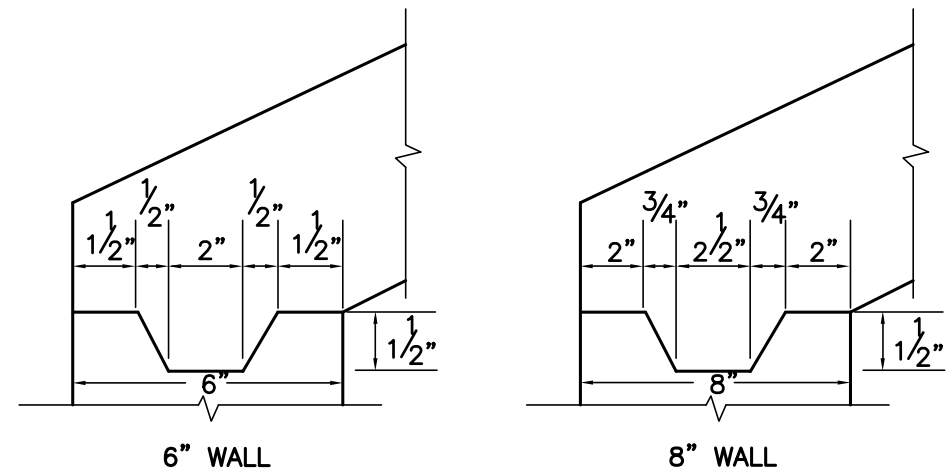
DEPARTMENT OF PUBLIC WORKS PINELLAS COUNTY, FLORIDA			
P.C.E.D. CURB INLET (TYPES RC-3, 4, & 5)			
APPROVED BY:	DATE	SHEET	INDEX
DIRECTOR OF PUBLIC WORKS	9/99	2 of 4	1255



SECTION F-F
NTS



NOSING DETAIL
NTS



KEY DETAIL
NTS

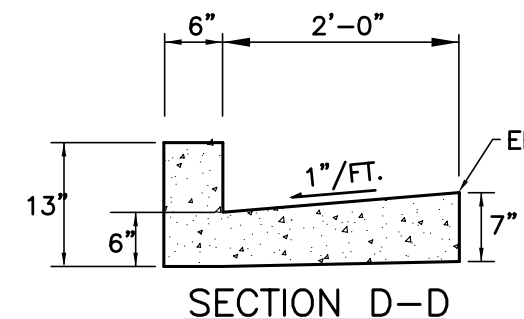
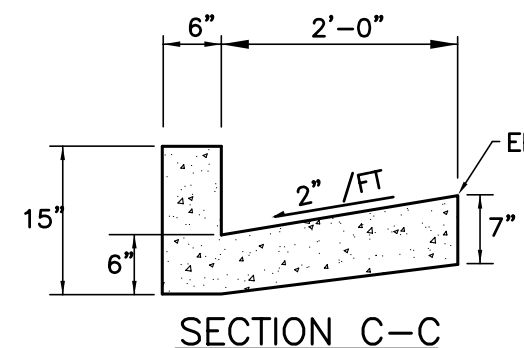
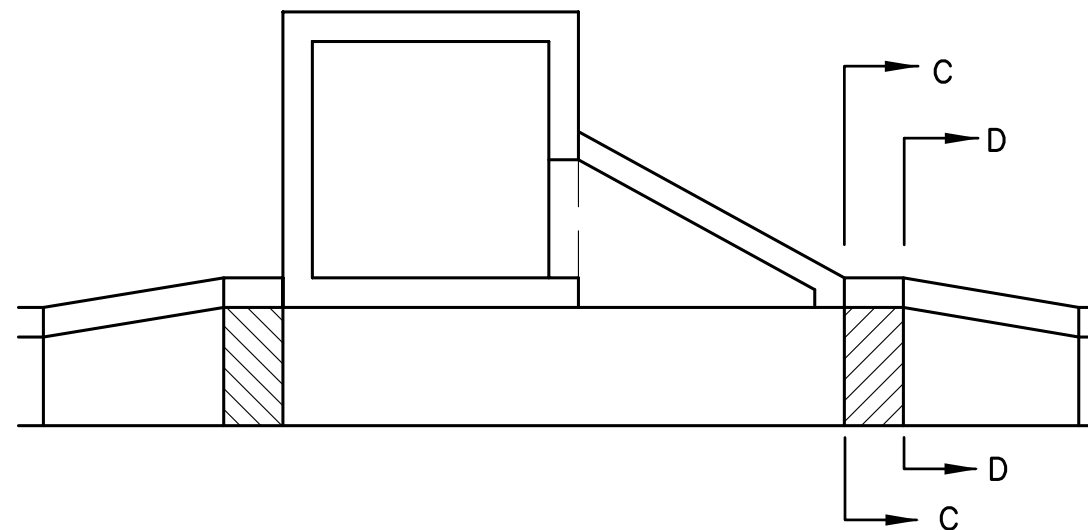
NOTES

1. RC-4 IS SYMMETRICAL ABOUT THE CENTERLINE
2. RC-5 IS CONSTRUCTED WITHOUT WINGS

DEPARTMENT OF PUBLIC WORKS			
PINELLAS COUNTY, FLORIDA			
P.C.E.D. CURB INLET			
(TYPES RC-3, 4, & 5)			
APPROVED BY:	DATE	SHEET	INDEX
_____ DIRECTOR OF PUBLIC WORKS	12/97	3 of 4	1255

GENERAL NOTES

1. THESE INLETS FOR USE WITH PINELLAS COUNTY TYPE 'A' CURB AND GUTTER, AND WITH FDOT TYPE 'F' CURB (FOR USE WITH TYPE 'F', SEE DETAILS FOR TYPE 'F' CURB TRANSITION).
2. ϕ OF INLETS SHOULD BE LOCATED AT PROPERTY LINES UNLESS OTHERWISE APPROVED.
3. COVER FOR ALL REINFORCING STEEL SHALL BE 2" MINIMUM.
4. SUGGESTED MAXIMUM INLET DESIGN FLOWS FOR 0.4% PROFILE GRADE AND 1/4"/FT. CROSS SLOPE.
 RC-3: 4.5 CFS (3'-6" WIDTH) / 5.5 CFS (5'-0" WIDTH)
 RC-4: 6.5 CFS (3'-6" WIDTH) / 7.5 CFS (5'-0" WIDTH)
 RC-5: 3 CFS (3'-6" WIDTH) / 4 CFS (5'-0" WIDTH)
5. INLETS SHALL BE CONSTRUCTED OF REINFORCED CONCRETE, AND MAY BE EITHER PRECAST OR POURED IN PLACE.
6. CONCRETE SHALL BE CLASS II, WITH $F_c' = 3400$ PSI (MIN). ($F_c' = 4000$ PSI (MIN) FOR TOP SLAB).
7. REINFORCING STEEL SHALL BE GRADE 40, DEFORMED, AND SHALL CONFORM TO THE REQUIREMENTS OF ASTM SPECIFICATION A 615 (GRADE 60 FOR TOP SLAB.)
8. WHEN INLET TOPS EXTEND INTO SIDEWALK OR OTHER PAVED AREAS, THE FINISHED SURFACE OF THE INLET TOPS SHALL CONFORM TO THE FINISHED GRADE AND CROSS SLOPE OF THE ADJACENT SIDEWALK OR PAVEMENT. TO ACHIEVE THIS CONFORMITY THE DEPTH OF THE INLET SLAB MAY BE INCREASED WHERE NECESSARY, AND/OR THE HEIGHT OF THE INLET SIDE AND REAR WALLS MAY BE INCREASED OR DECREASED AS REQUIRED. HOWEVER, THE THICKNESS OF THE INLET SLAB AT ANY POINT SHALL NOT BE LESS THAN THAT SHOWN IN THE PLANS, AND NO ADJUSTMENT SHALL BE MADE TO THE DEPTH OF INLET OPENINGS OR THE HEIGHT OF THE TOP FRONT EDGE OF THE INLET SLAB.
9. UNLESS OTHERWISE NOTED, ALL EXPOSED EDGES AND CORNERS OF CONCRETE SHALL HAVE A 3/4" CHAMFER.
10. FDOT TYPE 'J' BOTTOM MAY BE USED WITH 'RC-3', 'RC-4' AND 'RC-5' INLETS. IN SUCH CASES THE STRUCTURE BOTTOM MAY BE ROTATED AS DIRECTED BY ENGINEER IN ORDER TO FACILITATE CONNECTIONS BETWEEN THE STRUCTURE WALLS AND STORM SEWER PIPES.
11. INLET SHOWN IS TYPE 'RC-3' (SINGLE WING). TYPE 'RC-4' (DOUBLE WING) IS THE SAME AS 'RC-3', EXCEPT THAT IT IS SYMMETRICAL ABOUT CENTERLINE OF BOX, AND RC-5 IS THE SAME, EXCEPT THAT IT IS CONSTRUCTED WITHOUT WINGS.



NOTE

1. SECTIONS 'C'-'C' AND 'D'-'D' ON THIS SHEET SHOW TRANSITION FOR TYPE 'F' CURB

DEPARTMENT OF PUBLIC WORKS PINELLAS COUNTY, FLORIDA			
P.C.E.D. CURB INLET (TYPES RC-3, 4, & 5)			
APPROVED BY:	DATE	SHEET	INDEX
_____ DIRECTOR OF PUBLIC WORKS	12/97	4 of 4	1255