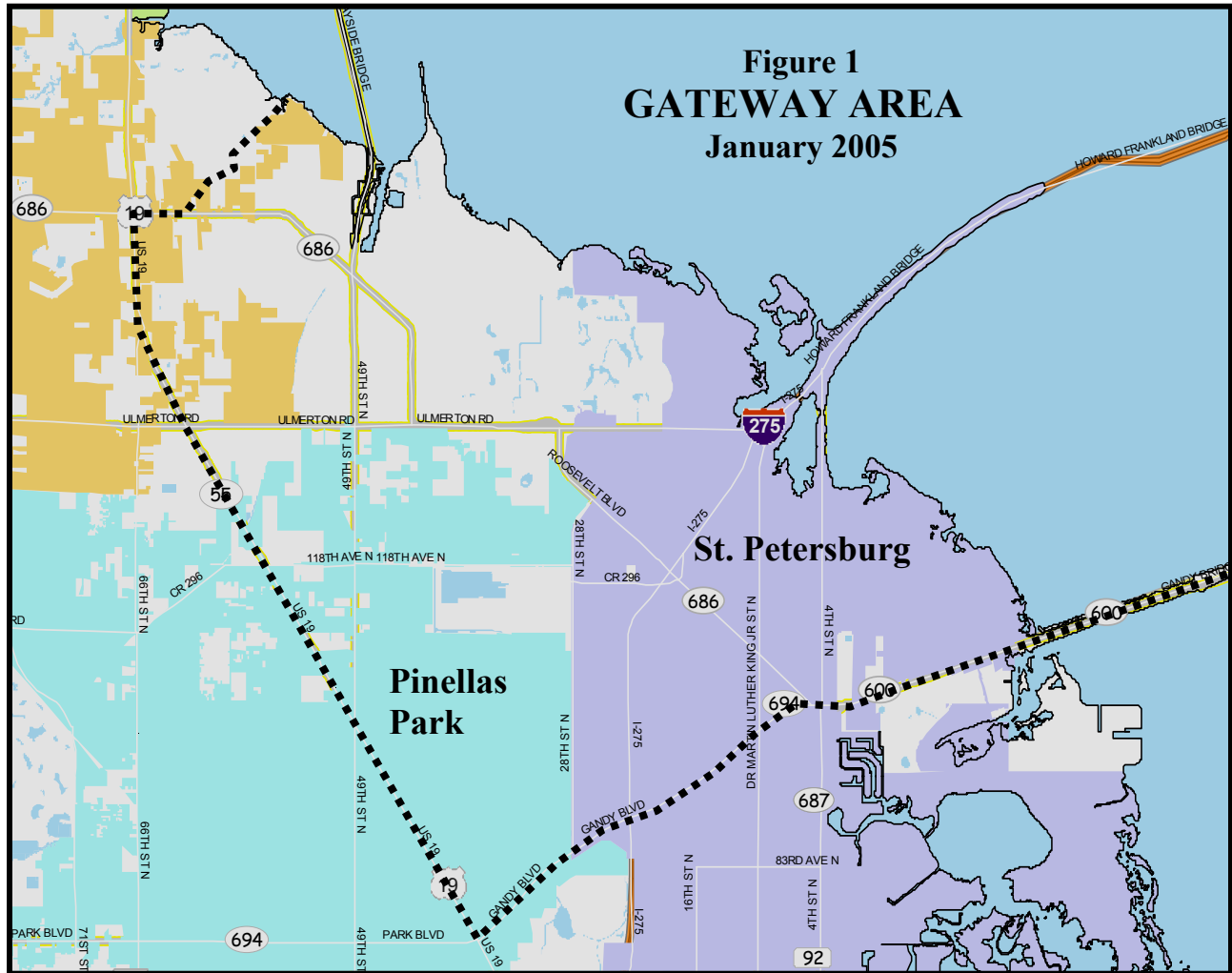


■ Overview of the Gateway Area ■

The Gateway Area is defined, for the purpose of this report, as an area of almost 12,700 acres east of U.S. Highway 19, bounded on the north by Long Branch Creek, on the east by Tampa Bay and to the south by Gandy Boulevard. Within these “triangular” boundaries today lie portions of four jurisdictions – the unincorporated County, the City of Largo, the City of Pinellas Park and the City of St. Petersburg. **Figure 1** depicts municipal and unincorporated boundaries in the Gateway Area.



Almost thirty years ago, the County’s first land use plan recognized the significance and potential of this mid-county location. That comprehensive plan identified the location as an economic and employment area, and the Board of County Commissioners applied the supporting land use designations that remain largely in effect today. Thirty years ago, most of the Gateway Area was unincorporated. The importance of residential land uses to support the employment in the Gateway Area was also recognized. In fact, the major residential areas today in the Gateway Area were either already anticipated or already under development thirty years ago, again with the support of the appropriate