

Pollution Prevention Is Up To You!

Did you know that stormdrains are NOT connected to sanitary sewer systems or treatment plants? In Pinellas County, stormdrains flow directly into our creeks, lakes, Tampa Bay and the Gulf of Mexico without treatment.

The primary purpose of stormdrains is to carry rainwater away from developed areas to prevent flooding. Yard waste dumped into stormdrains carries garden chemicals into waterways, releases harmful pollutants and creates algae blooms which absorb oxygen fish need to survive. Disposing of yard waste into stormdrains causes serious ecological problems – and is PROHIBITED BY LAW.

Only Rain Down the Stormdrain!

This brochure is one of a series describing storm water protection measures. To request additional brochures please contact:



Pinellas County
Department of
Environmental Management
Watershed Management Division
(727) 464-4425

www.pinellascounty.org/environment

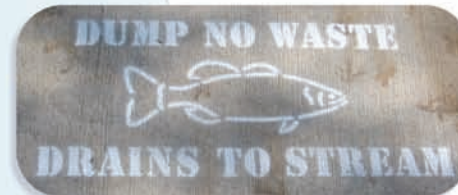
Other brochures in this series include:

- ✓ Concrete and Mortar Projects
- ✓ A Guide For Homeowners
- ✓ Landscaping Companies
- ✓ Pool Construction and Maintenance
- ✓ Power Washing



Produced in cooperation with the
Pinellas County Communications Department.

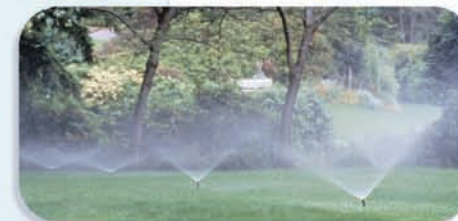
Pinellas County complies with the Americans with Disabilities Act. To obtain accessible formats of this document, please contact the Communications Department at (727) 464-4600/TDD (727) 464-4431.



A Guide to the Fertilizer Ordinance

This summer give yourself AND your lawn a vacation.

Don't fertilize from June through September.



Guide to the Fertilizer Ordinance

Pinellas County's fertilizer ordinance, Article XIII, Chapter 58, is intended to protect the water quality and natural habitats of creeks, lakes and marine waters that receive discharge from our stormdrain system. The ordinance regulates landscape maintenance practices and the sale and use of fertilizers containing nitrogen and/or phosphorus within Pinellas County. **This means that homeowners, landscapers and lawn care services must adhere to specific practices as outlined in the ordinance.**

Violators of the fertilizer ordinance may be fined up to \$10,000 per day.



Fertilizer Regulation and Best Management Practices (BMPs)

The following fertilizer regulations and BMPs are procedures that should always be used to encourage healthy yards and avoid polluting our waterways.

Fertilizer containing NITROGEN (N) and/or PHOSPHOROUS (P) cannot be used in yards between June 1 and September 30.

- Fertilizers cannot be applied if the National Weather Service forecasts heavy rains to occur within 24 hours in Pinellas County.
- The application of granular fertilizer shall be limited to no more than 4 pounds of nitrogen per 1,000 square feet per year.
- Fertilizers with nitrogen or phosphorous may not be needed if using reclaimed water.
- Florida soils naturally contain phosphorous; a soil test is required before using fertilizer containing phosphorous.
- Newly-installed landscape cannot efficiently use nitrogen; do not apply nitrogen for the first 30 days.
- Granular fertilizers with nitrogen must contain at least 50% slow release nitrogen (SRN). It is your responsibility to check the fertilizer bag for the correct percentage.
- Keep fertilizers off pavement (sidewalks, driveways, streets, etc.). Overcast must be returned to the landscape areas or swept up immediately.
- Deflector shields must be used on fertilizer spreaders.
- Fertilizer must not be applied within 10 feet of any wetland or water body.
- No grass clippings, leaves, etc. may enter the street, stormdrains or surface waters.
- All fertilizer applicator personnel must be state-certified by January 19, 2011, according to Florida statute 482.1562. ASK!
- All landscape maintenance staff must be trained in county-approved BMPs for mowing, trimming and landscape debris management by July 18, 2011. ASK!



Who To Contact:

For any questions on disposal of waste, including fertilizers, pesticides or weed control products, contact the Pinellas County Department of Solid Waste Operations at (727) 464-7500.

For information or to report illegal dumping, please call (727) 464-4425, e-mail watershed@pinellascounty.org or visit www.pinellas.wateratlas.usf.edu/StormwaterEd

24-hour hotline: (727) 464-5060 (non-emergency spills only)

Emergencies: Please contact your local fire department.